



NIBS STUDIO



NIBS STUDIO

NATURE INTEGRATED BESPOKE SERVICES STUDIO

NIBS Studio believes in experiencing space beyond the built.

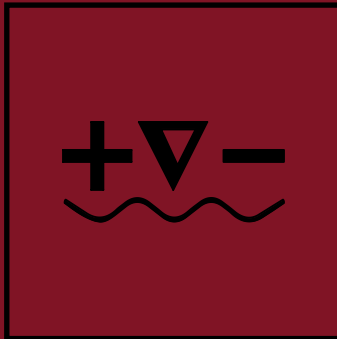
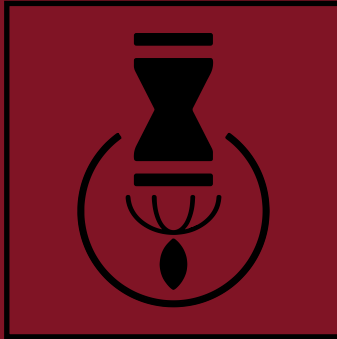
A multifaceted studio, offering an integrated approach to Architecture, Interior and Urbanscape.

A determined approach to design which is in dialogue with context and materials, and engagement of people with the space.

We believe in having a close collaboration with clients, developing a deep and holistic understanding of their needs.

The result is thus that, evokes emotion, stimulates intellect, and reflects qualities of life with bespoke designs.

A branched association of individuals where Culture, Nature and Future is respectfully followed and advocated.



PROJECTS

FLINT STONE

3 BHK Apartment | Pune

ENERGY INCEPTION

Gym | Pune

THE WAREHOUSE TREE

Store of Hardware & Veneer | Pune

THE PINK COURTYARD

Bungalow | Rajasthan

MALKAPUR RESIDENCE

Bungalow | Karad

ESBEE

Canteen | Pune



INTERIOR DESIGN

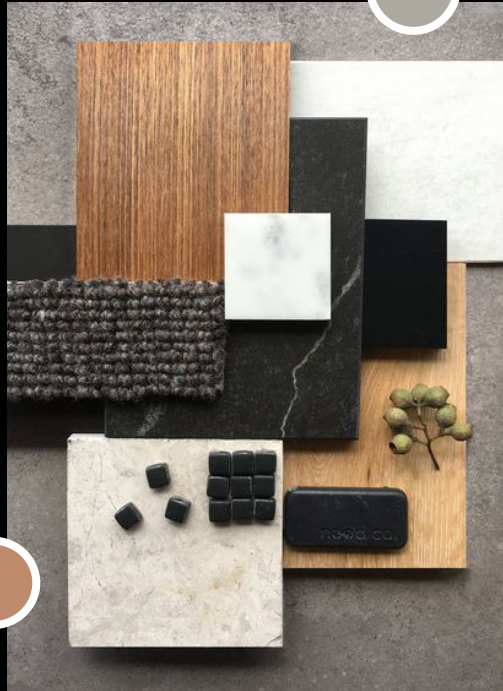
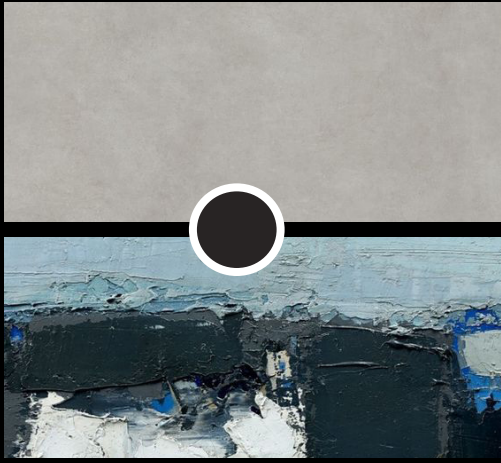
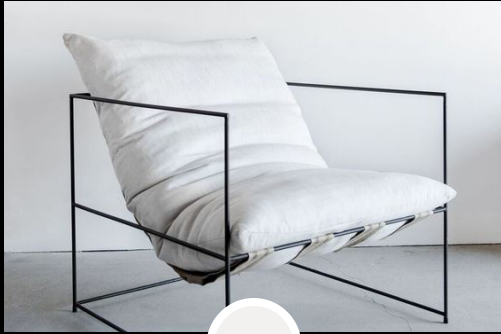
FLINT STONE

INSPIRED BY THE EARTH

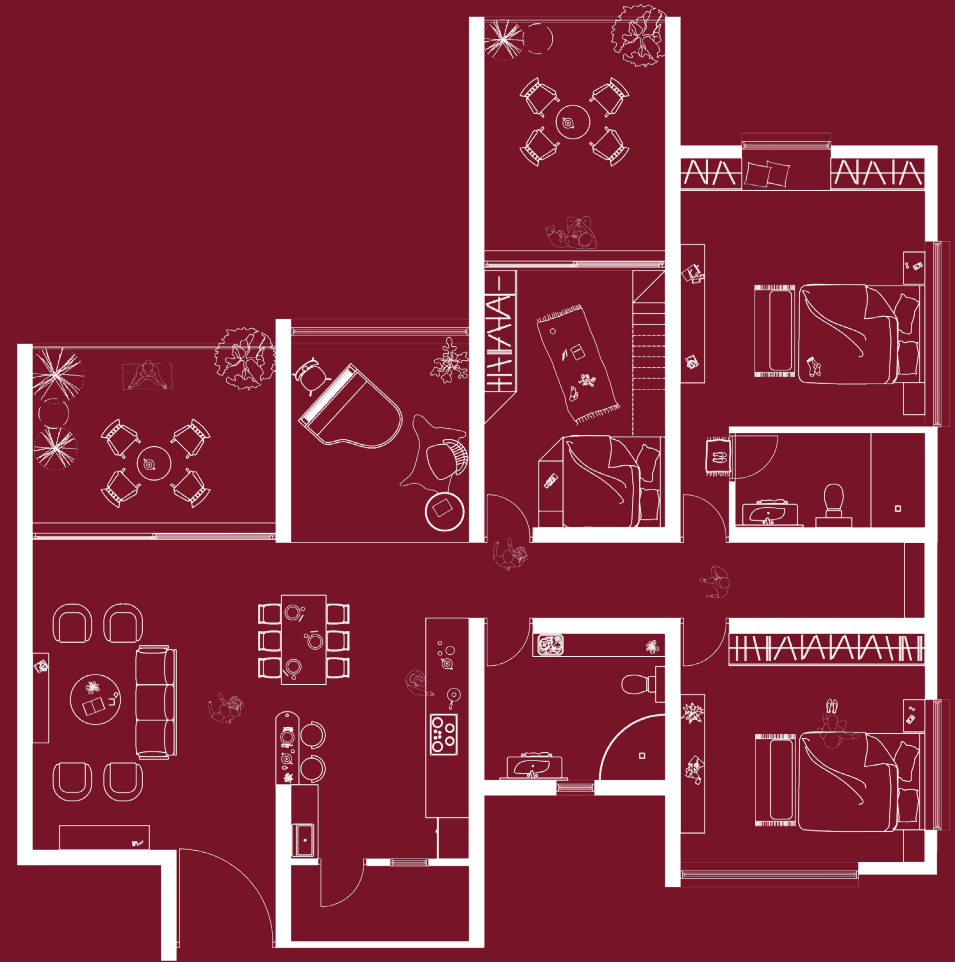
Typology: 3bhk Apartment
Location: Mukundnagar, Pune, India
Carpet Area: 200 sq.m.
Year: 2022

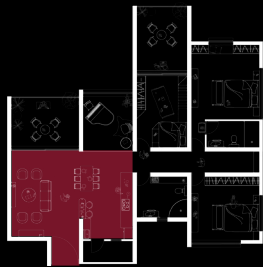
The goal of this project is to create a reminisce, a way of traditional living which goes beyond sustainability and enhances the betterment of quality living.

INSPIRATION



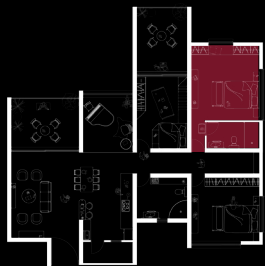
FLOOR PLAN





The heart of the home; an integration of kitchen-dining-living room with alliance of warm materials





The cozy nook of the home; a perfect combination of class & comfort to never provide a dull moment at any time of the day.







INTERIOR DESIGN

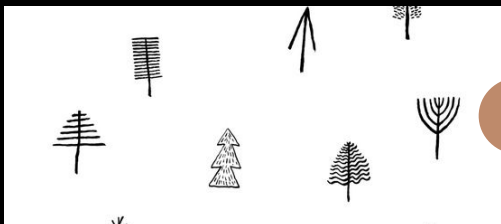
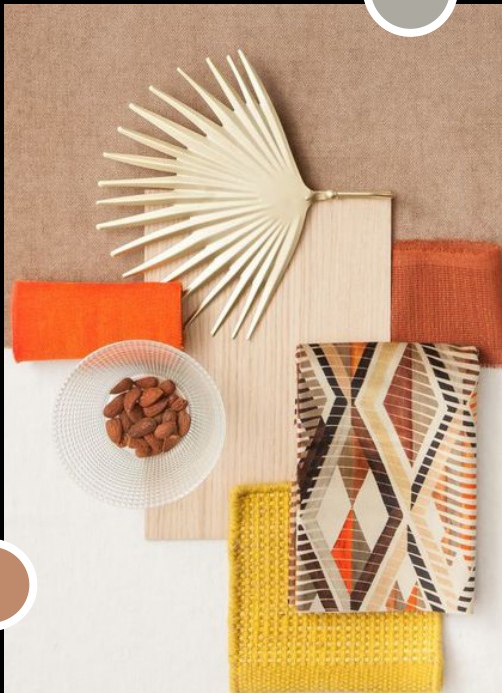
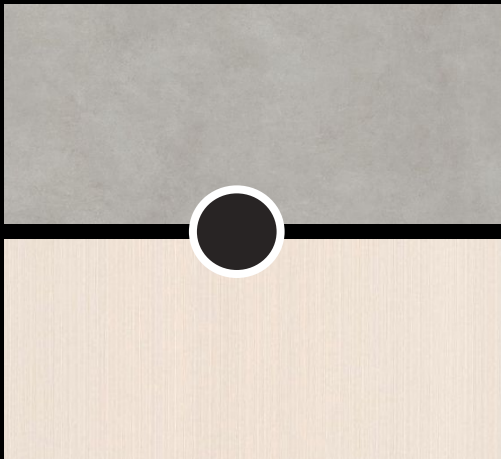
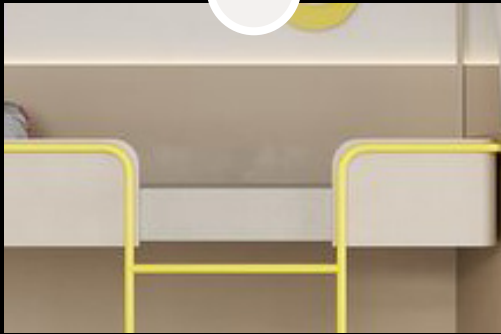
PIYU'S PLAY ABODE

A FUN BEDROOM FOR A TODDLER

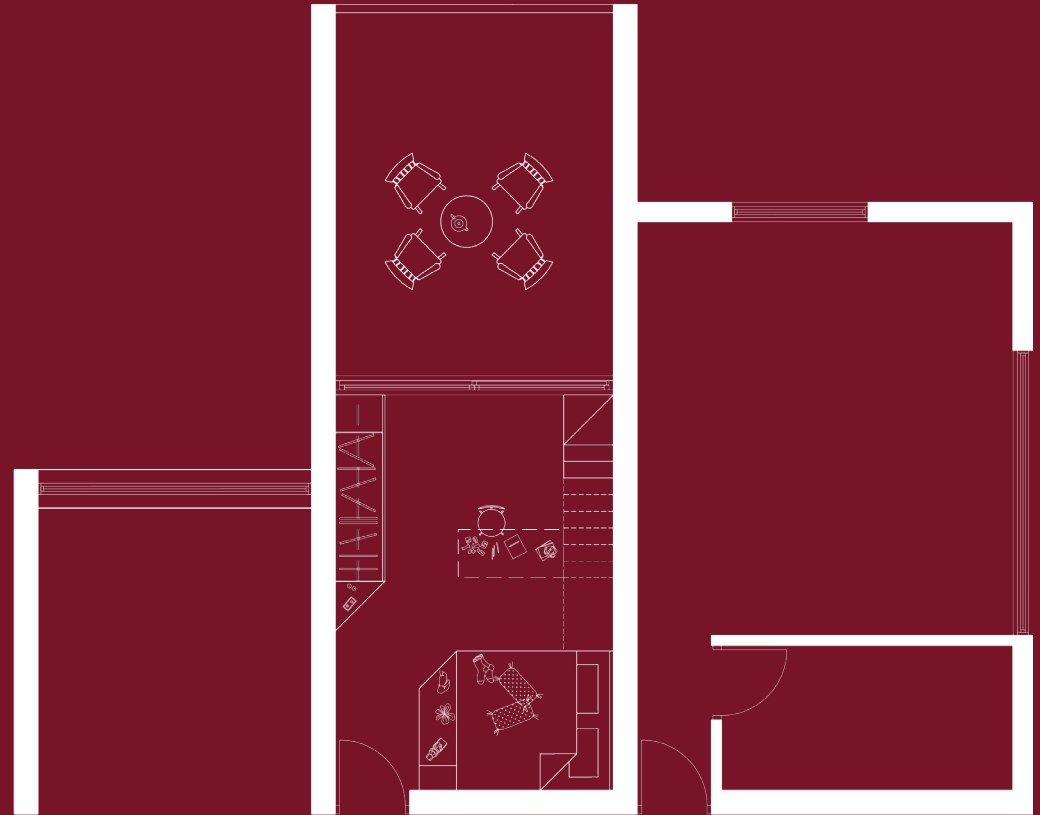
Typology: 3bhk Apartment
Location: Mukundnagar, Pune, India
Carpet Area: 16 sq.m.
Year: 2022

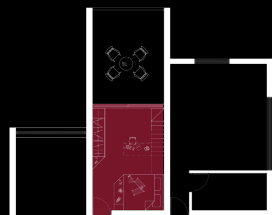
What would a five year old would want in his room? It's all here!
A neutral base with pop of colors to make the bedroom vibrant and to grow
and learn into.

INSPIRATION

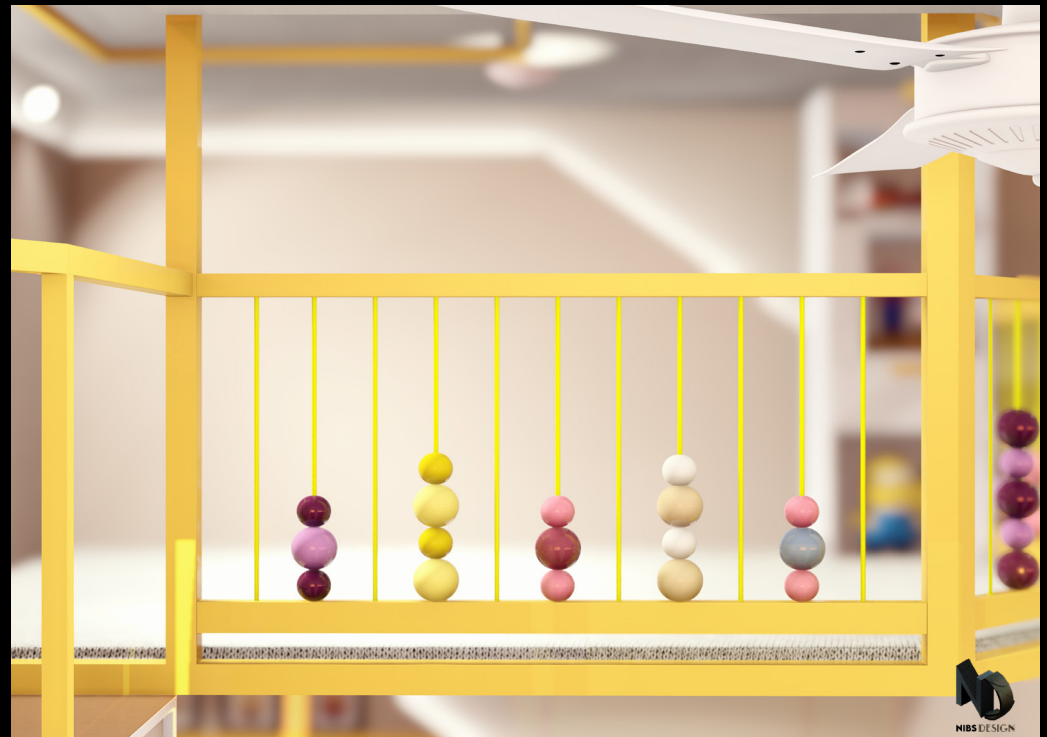


FLOOR PLAN





A cozy bedroom with tremendous scope to play along with study and sleep. A truly fun abode where a child will grow into without any distracting material and color palette.





INTERIOR DESIGN

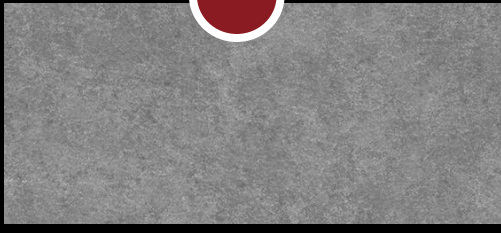
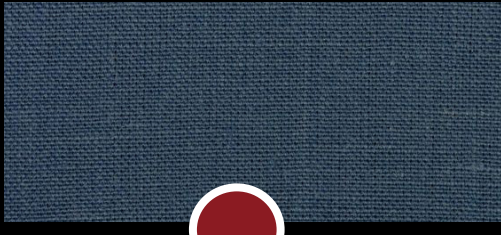
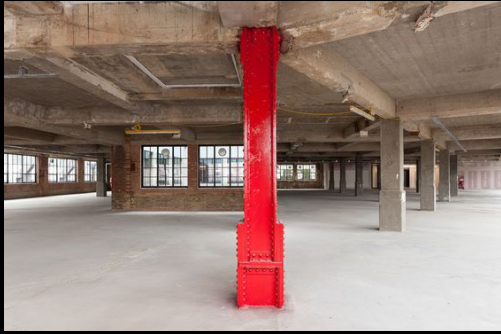
ENERGY INCEPTION

DESIGN AS A MEDIATOR

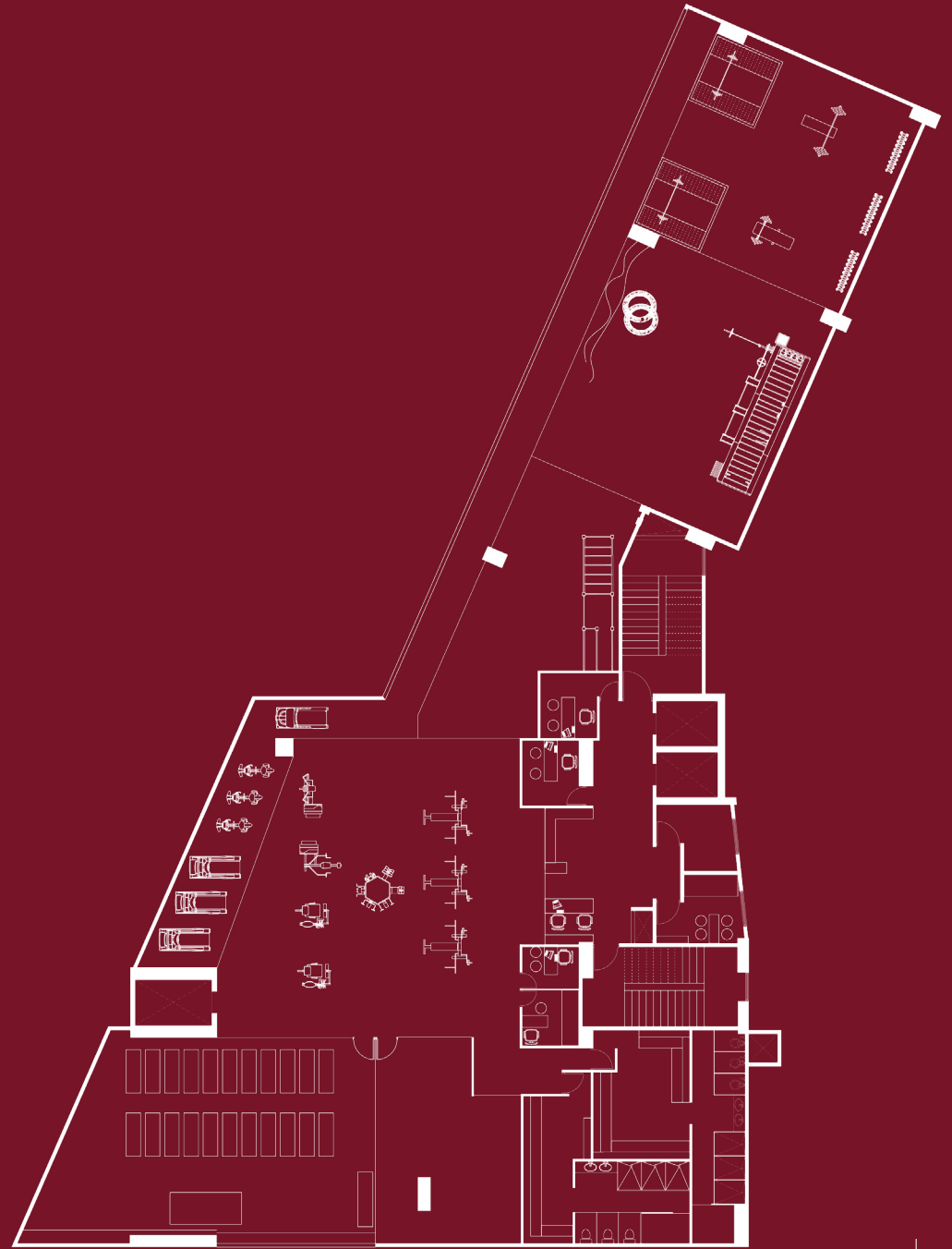
Typology: Gym
Location: NIBM, Pune, India
Carpet Area: 750 sq.m.
Year: 2022

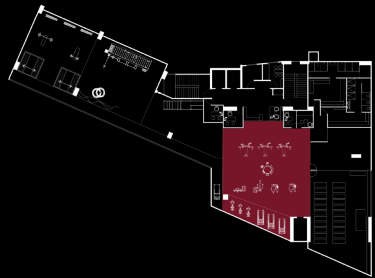
The project is focused on having a uniform identity with raw materials as a core concept. Laid on an elongated floor completely dedicated to the gym, having a unified aesthetic was crucial and important aspect.

INSPIRATION



FLOOR PLAN





The core; an open raw space with fluent circulation for an exercise routine. The bold colors and urban material palette keeps distraction at bay.







INTERIOR DESIGN

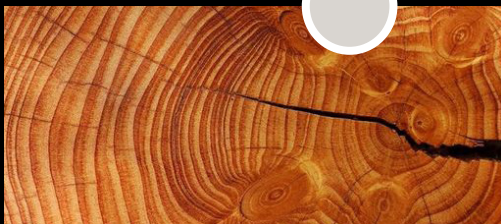
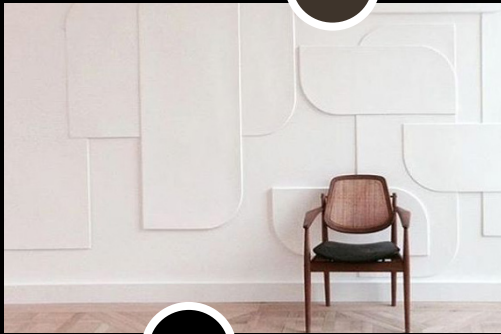
THE WAREHOUSE TREE

EXPERIENCE AND DISPLAY

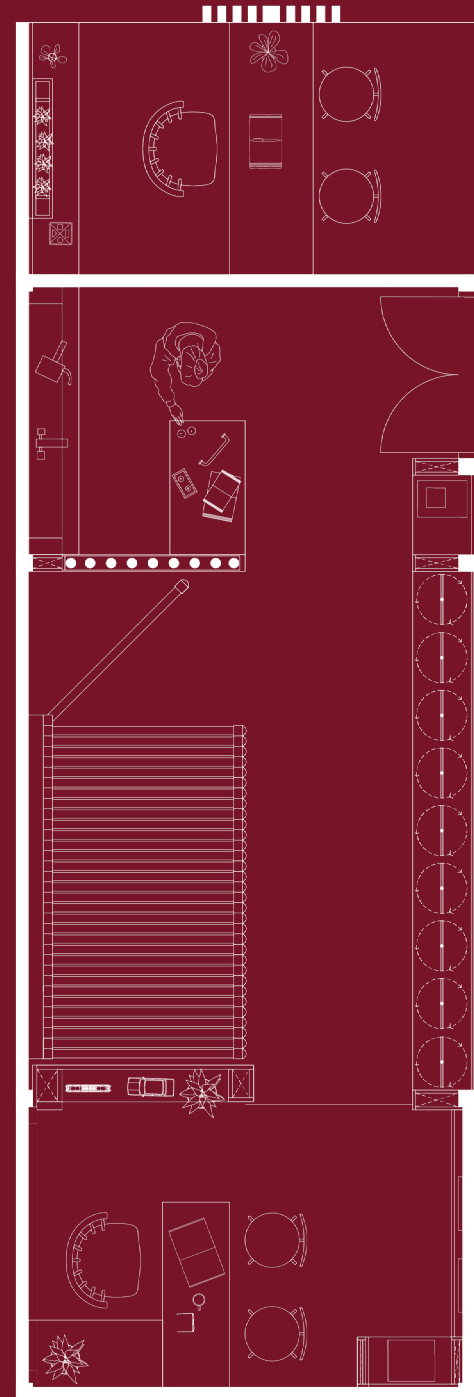
Typology: Store of Hardware & Veneer
Location: Timbermarket, Pune, India
Carpet Area: 25 sq.m.
Year: 2023

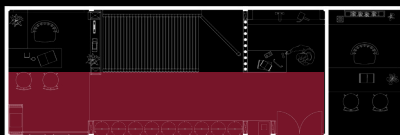
The core of this project is devoted to design a personal, meaningful and relevant architectural element consistently infilled in the territory of hardware and veneer. One of a kind showroom to come experience the beauty of various materials.

INSPIRATION



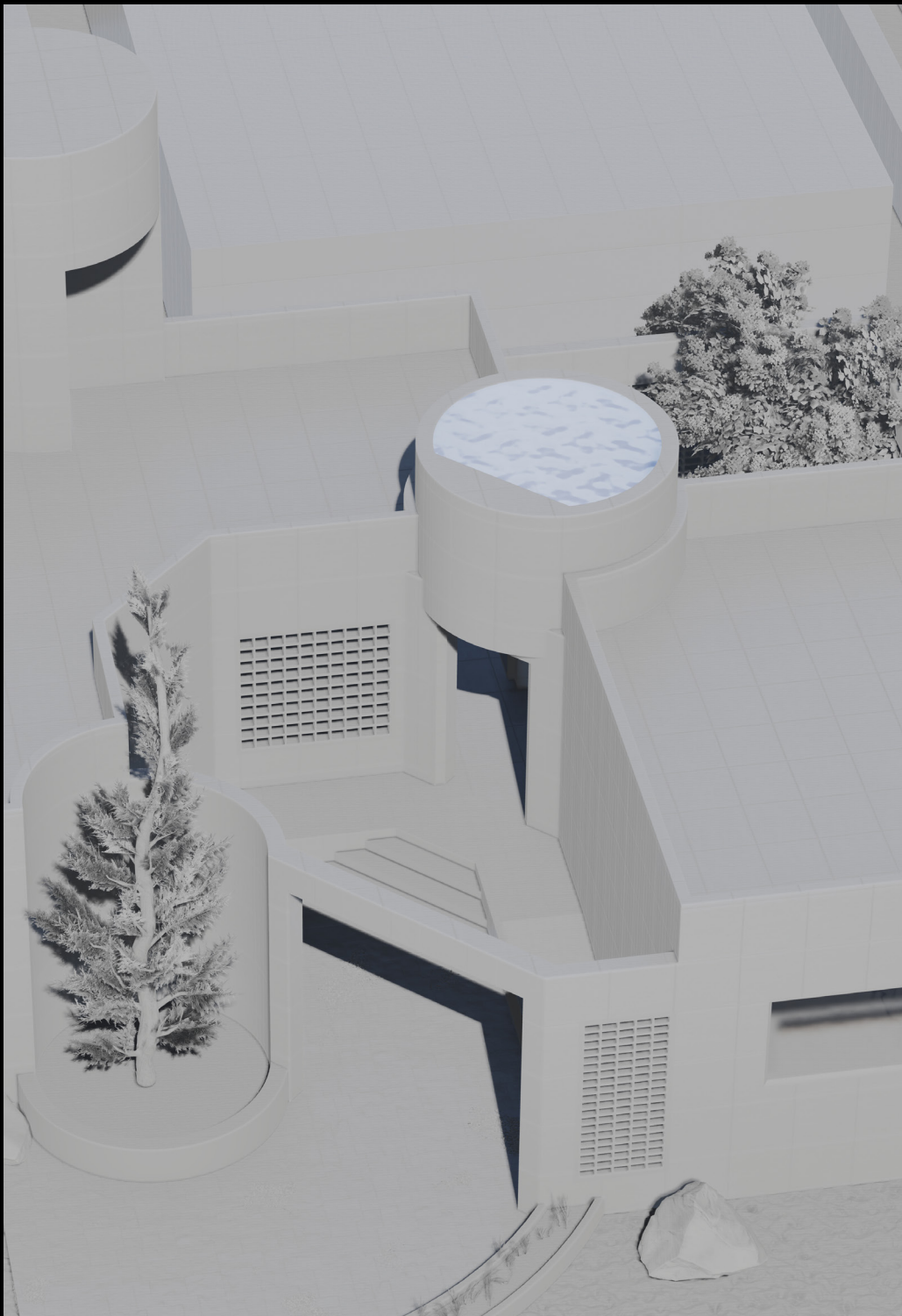
FLOOR PLAN





An experience centre; an organic play of subtle material palette and arches as an primary element to establish a welcoming and one of a kind experience centre.





ARCHITECTURAL DESIGN

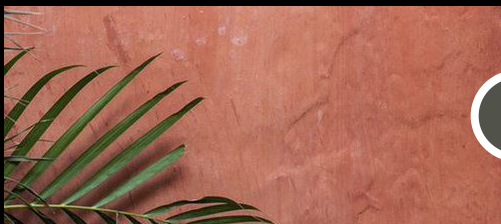
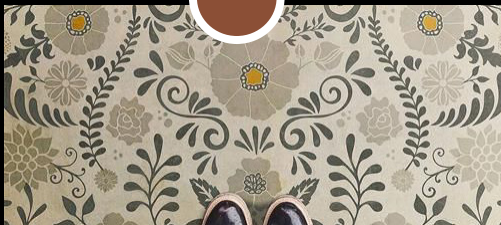
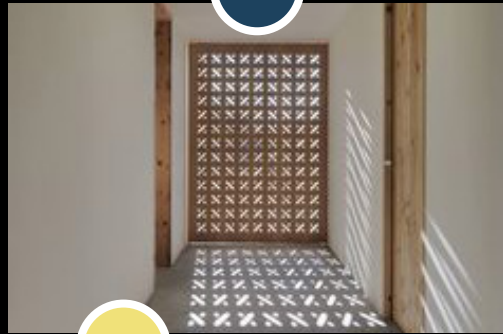
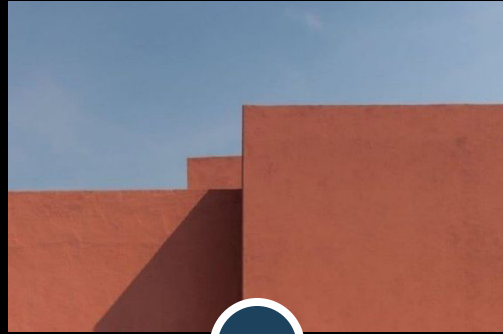
THE PINK COURTYARD

AMALGAMATION OF MODERN & TRADITIONAL

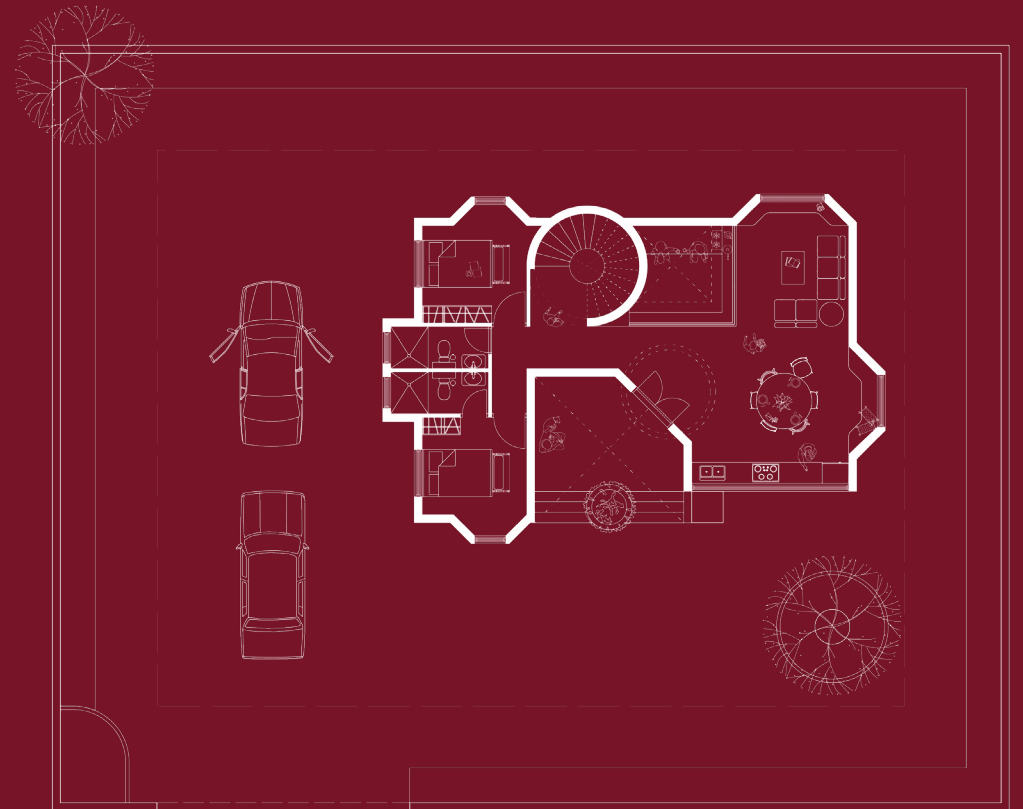
Typology: Family vacation home
Location: Kalandari, Rajasthan, India
Carpet Area: 95 sq.m. / 130 sq.m.
Year: 2023

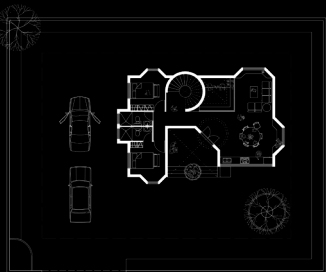
The design of this structure is an infusion of mass play. Designed for a family residing in a metropolitan city, the balance between modern requirements and traditional elements and materials is well composed.

INSPIRATION



FLOOR PLAN

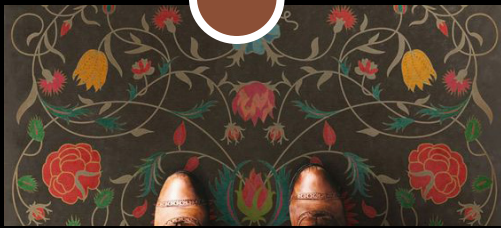
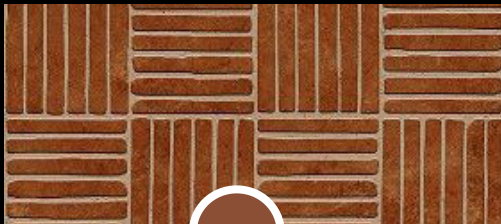
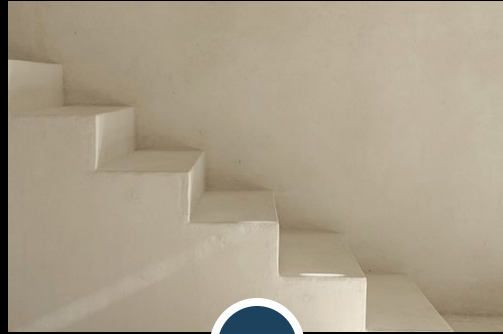




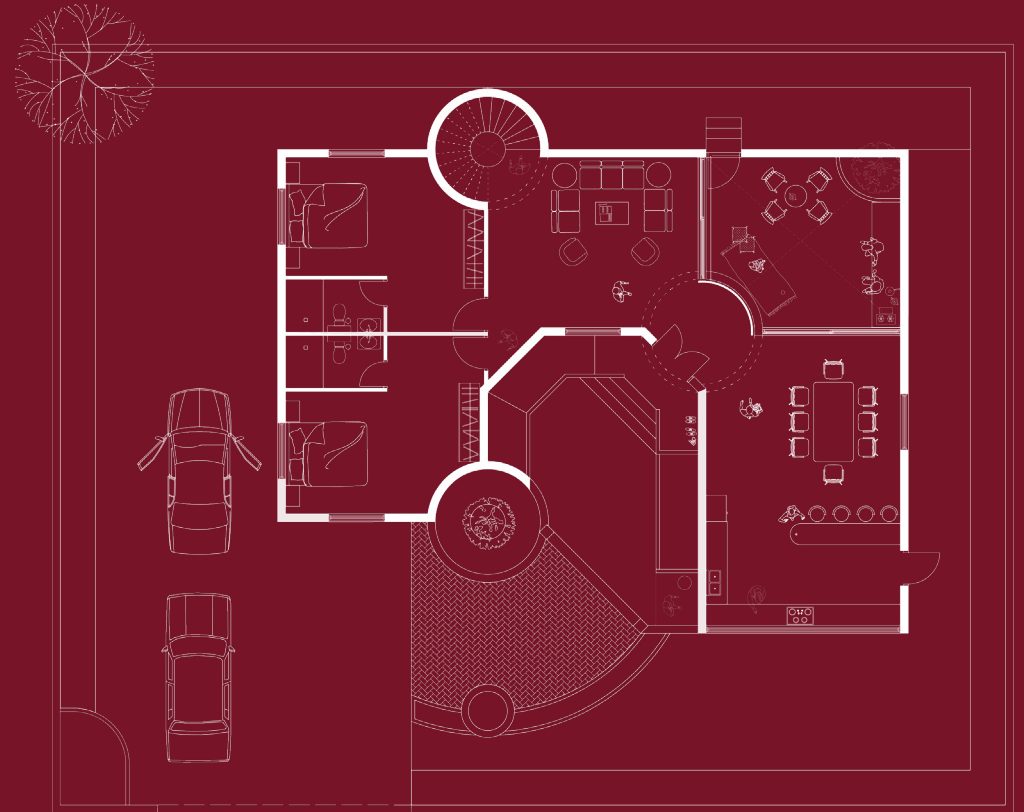
Spaces of conversation; the home with open layout & courtyard reflects as a perfect combination for a vacation home.



INSPIRATION



FLOOR PLAN





Spaces of memories; the vacation home which creates opportunities for the residents to spend their time together with a blend of architecture and known comforting material palette.





INTERIOR DESIGN

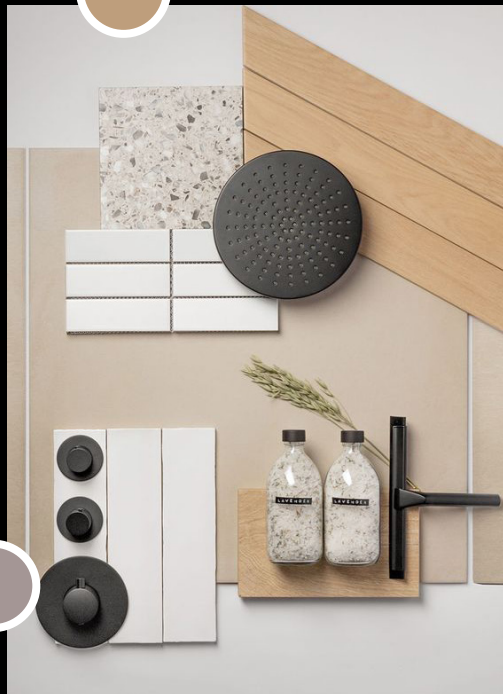
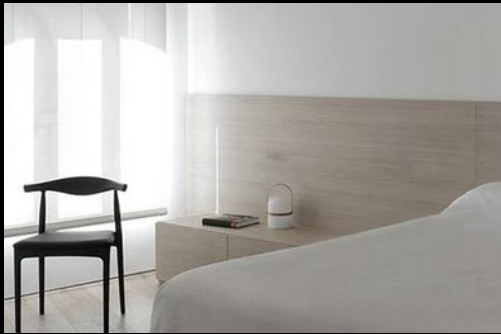
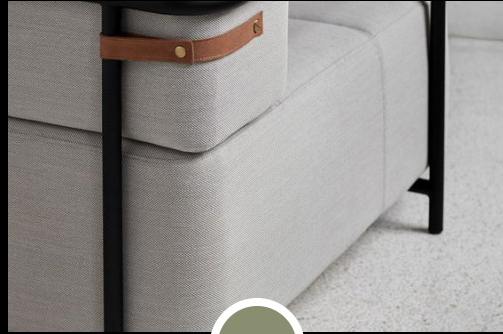
MALKAPUR RESIDENCE

A SIMPLE ABODE

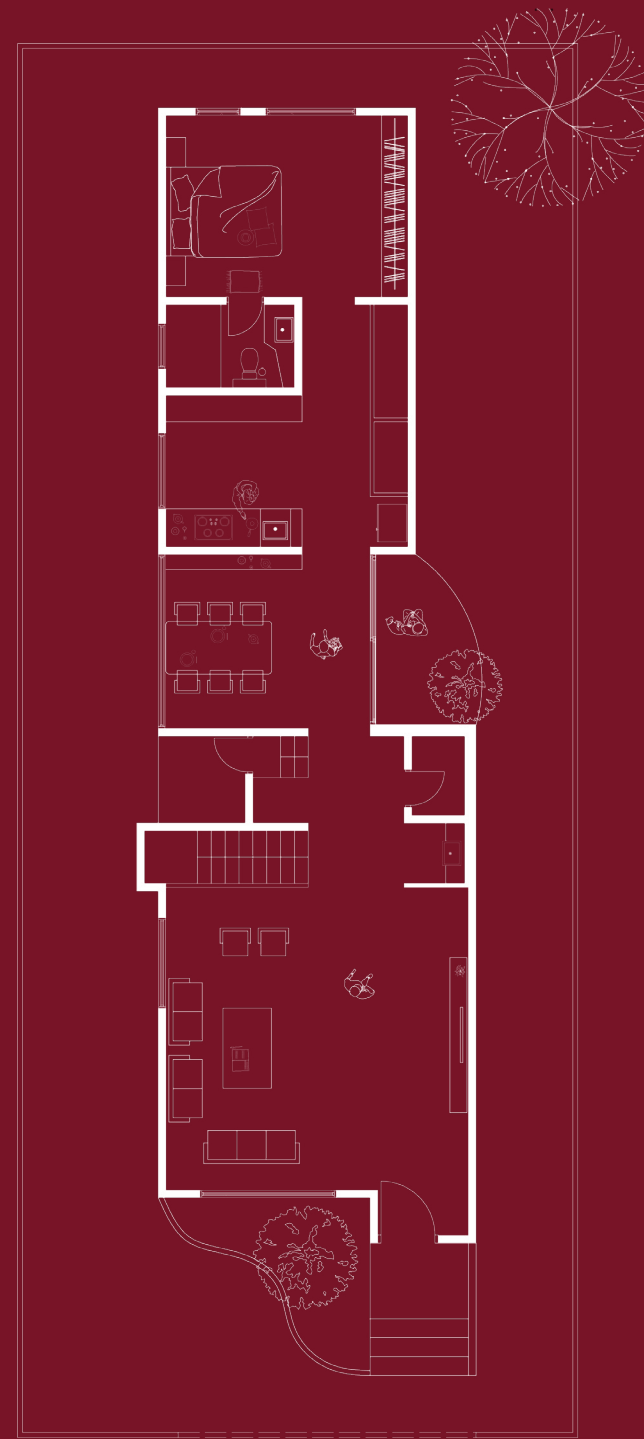
Typology: Residential Bungalow
Location: Malkapur, India
Carpet Area: 260 sq.m.
Year: 2023

This bungalow is very simple with its characteristics. A selection of local materials and minimal aesthetics in furniture and ambience was an intentional design choice.

INSPIRATION



FLOOR PLAN





Inviting space; the living room which acknowledges warm and comforting furniture pieces with a touch of minimal elements.





INTERIOR DESIGN

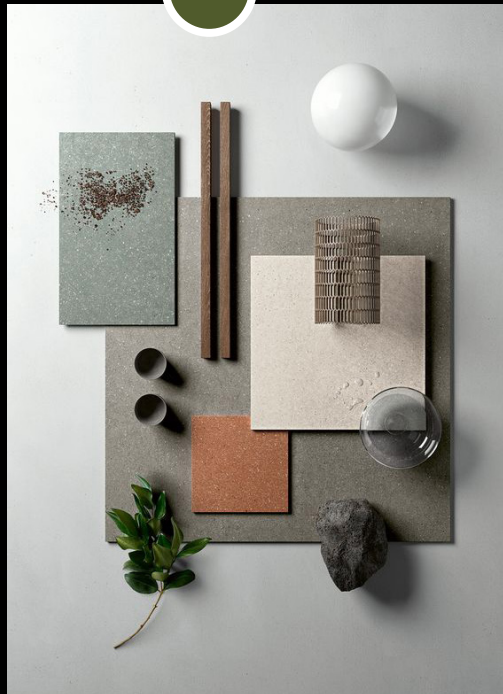
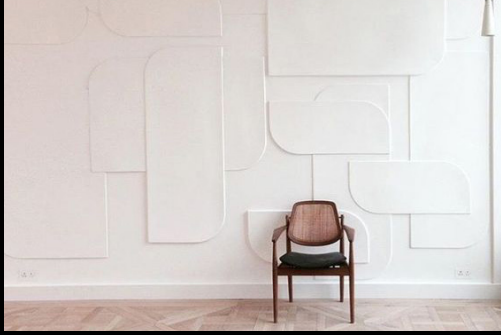
ESBEE

HEAVEN OF ARCHES

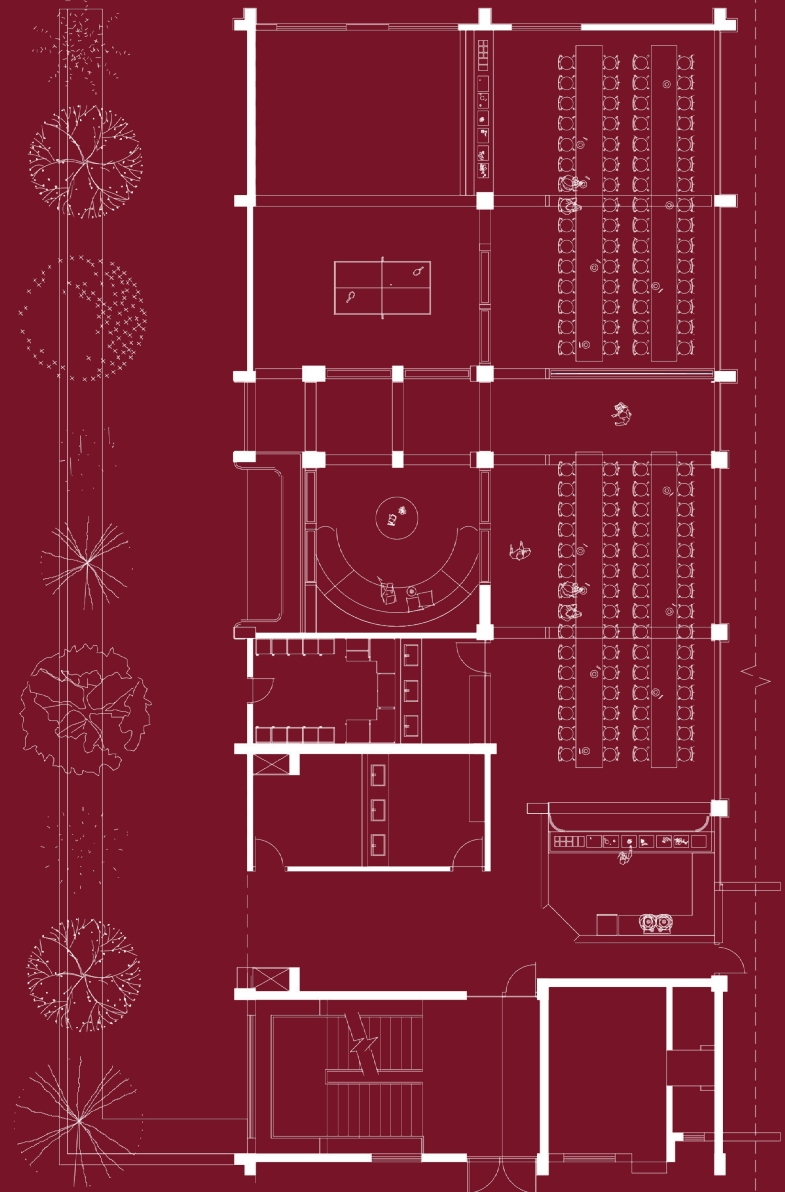
Typology: Canteen
Location: Pune, India
Carpet Area: 600 sq.m.
Year: 2024

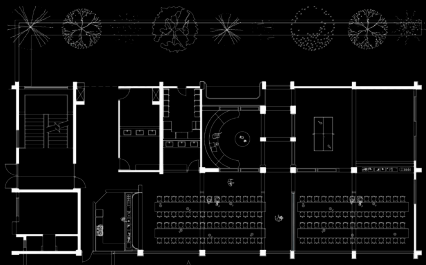
The dining area exudes a serene atmosphere through a thoughtful selection of materials, creating a visually pleasing aesthetic. A sophisticated color palette adds an air of elegance, enhancing the overall ambiance to provide a sense of comfort for both staff and guests.

INSPIRATION



FLOOR PLAN





A space which will stand different in the vicinity with its simplicity of material palette and solid stature.



THANK YOU

Chirag Nibjiya
Principal Designer

Aishwarya Nibjiya
Principal Architect



FIND US AT

STUDIO 19, HYDE PARK, PUNE 411037

+91 7769064277

DESIGN@NIBSSTUDIO.IN

WWW.NIBSSTUDIO.IN



TAP TO KNOW MORE!